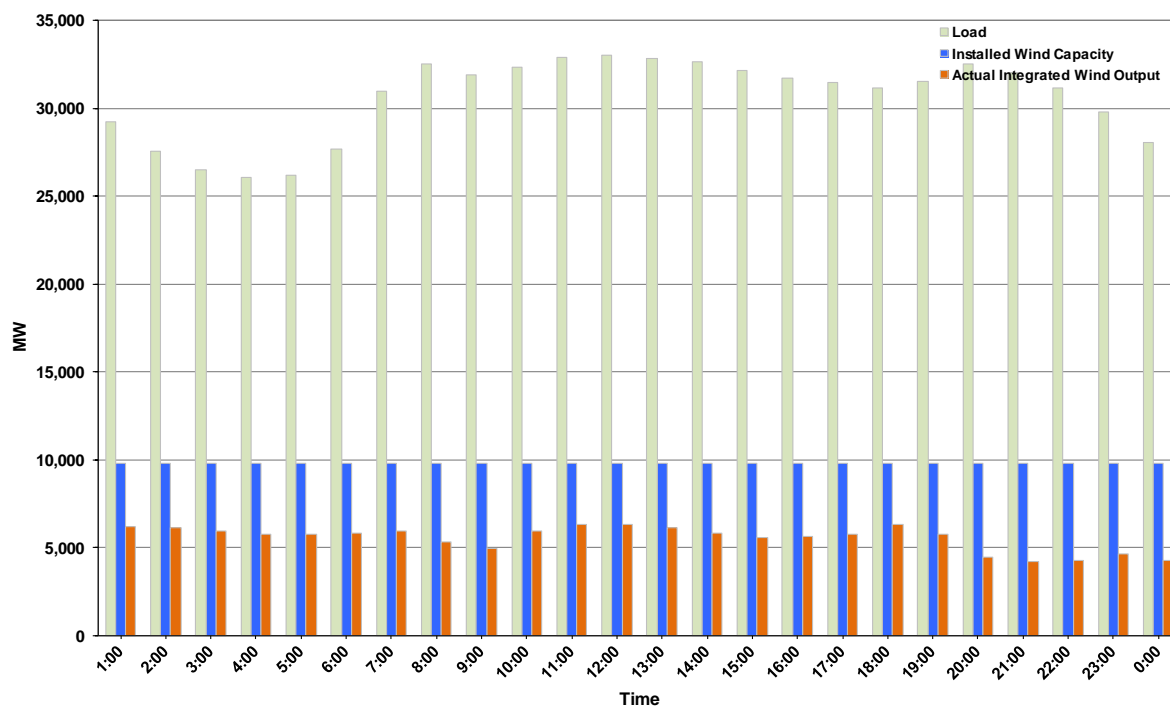




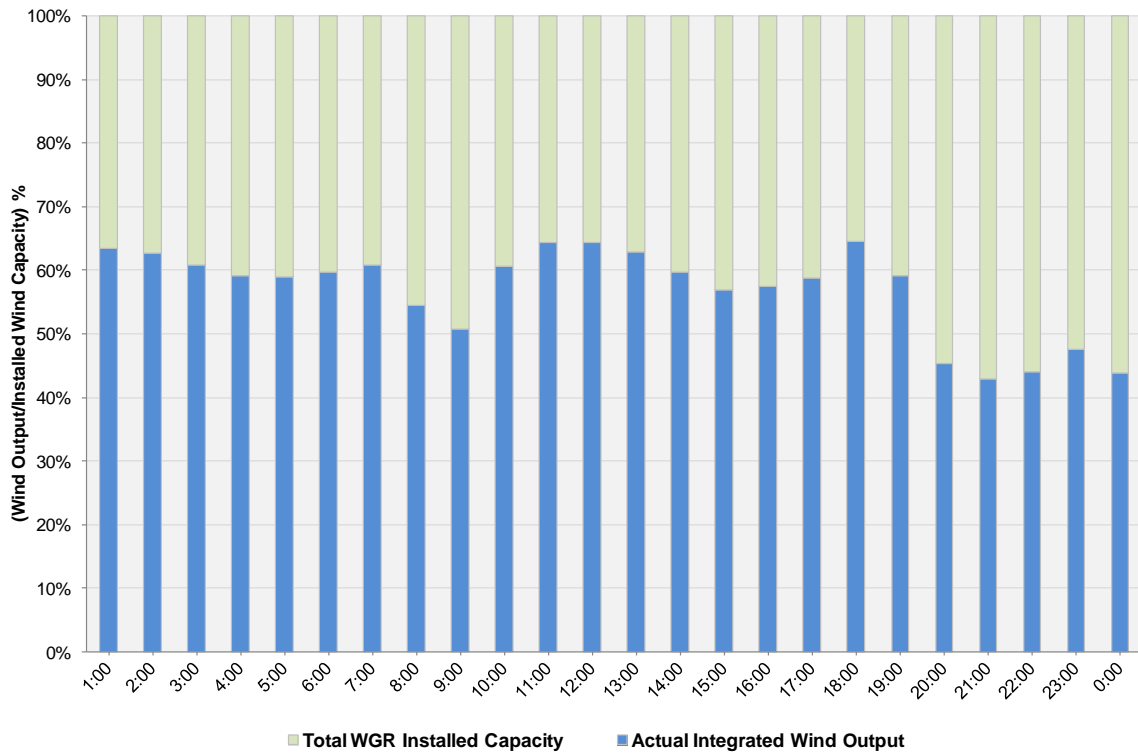
ERCOT Grid Operations Wind Integration Report: 10/26/2012

Peak Load	33,019 MW
Load Peak Hour (HE)	12
Wind over Peak	6,310 MW
Wind Record 06/19/12	8,368 MW
Max Wind Value	6,495 MW
Wind Peak Time	17:49
Wind Integration %	20.80%

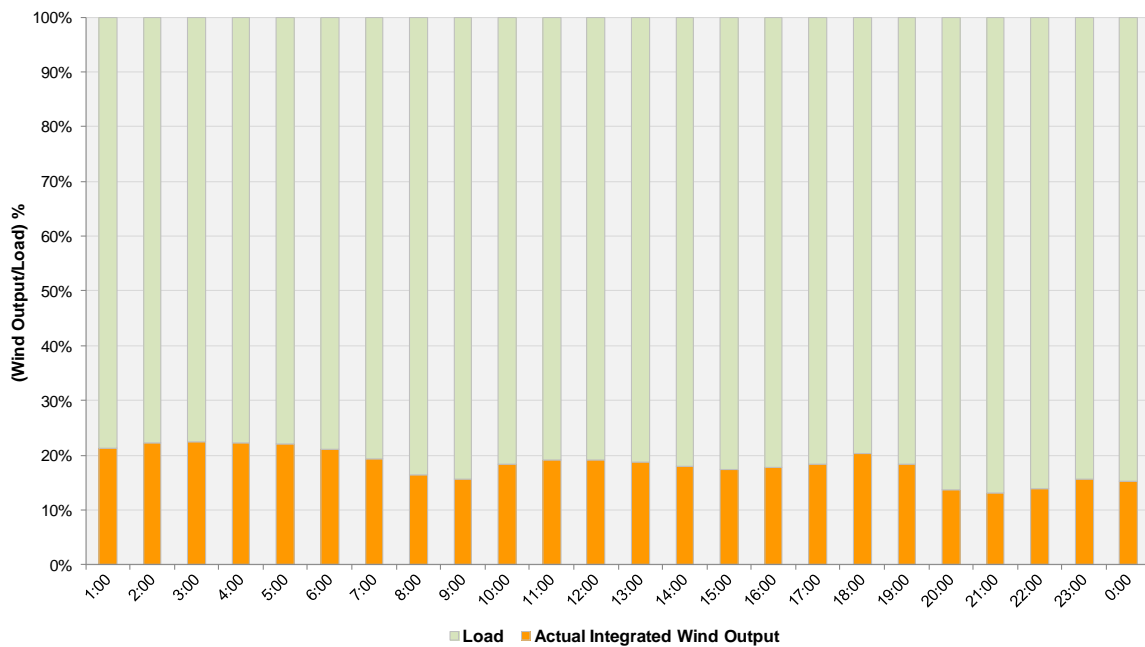
**Hourly Average Actual Load vs. Actual Wind Output
10-26-2012**



Actual Wind Output as a Percentage of the Total Installed Wind Capacity
10-26-2012



Actual Wind Output as a Percentage of the ERCOT Load
10-26-2012



ERCOT Load vs. Actual Wind Output 10/19/2012 - 10/26/2012

